

MK Deal

Next level

Finalised
3 April 2025



MK TOGETHER
**Health and Care
Partnership**

Our journey so far...

Developing the 'MK Deal'

Back in 2022 we broke new ground with the 'MK Deal' – an agreement reached with the ICB that we would be supported to take a place-based approach to four agreed **projects**

Strengthening partnership governance

We then evolved our partnership approach, creating a broad Health and Care Partnership and a more focused Joint Leadership Team (JLT) to create the right conditions for effective collaboration

Building place-based support

A small team of five ICB colleagues were deployed to support our place-based work, including delivering our 'MK Deal' projects. An independent review then helped us reflect on our progress

Learning from our four 'MK Deal' projects

As our priority projects developed, each with their own programme lead and steering group, we've learnt a lot about what works and where we didn't get it quite right

Setting out a long-term vision

Then, in 2024 we thought it was time to set out what we're trying to achieve against each of our MK Deal projects – asking ourselves where do we want to be in 2028?

MK Deal projects

Improving system flow

Tackling obesity

Children's mental health

Locality working

Complex Care
Removed

What we've achieved together...

Improving system flow

- Created a brand-new Integrated Discharge Hub, with housing and the voluntary and community sector.
- Introduced a joint CNWL, MKCC and MKUH care academy to improve reablement skills across a range of roles.
- Developed new joint health and social care pathways that adapt to people's needs as they recover from hospital.
- Agreed meaningful metrics and put in place robust monitoring of progress and impact.

Tackling obesity

- Launched innovative wearable technology and incentivisation programme focusing on Type 2 diabetes.
- Introduced a local Healthy Weight Declaration, signed by MKUH and MKCC to champion and facilitate positive change.
- Redesigned and now repurchased the 'Tier 2 Plus' weight management service for children and young people.
- Enhanced our approach to data collection and how we use data to enable targeted interventions.

Children's mental health

- Boosted clinical psychology capacity in CAMHS to assist social workers with trauma-informed care.
- Rolled out multi-professional training on Autistic Spectrum Conditions.
- Commissioned a crisis sanctuary (crisis café) helping young people in crisis or distress in the evening
- Bought in a specialist to help us put a single point of access (SPA) in place to better manage mental health referrals.

Locality working

- Piloted new and innovative ways of locality-based multi-professional working through the Bletchley Pathfinder.
- Developed a standardised multi-disciplinary 'problem solving model'.
- Established a forum focusing on children at risk of school exclusion in the area due to unmet health and care needs.
- Supported a programme of community engagement projects, including events and over thirty new clubs and activities.

Why we need to change...

Our ambition for health and social care



WE TOGETHER
Health and Care
Partnership

Our strong place-based leadership arrangements have demonstrated what we can do and that we have the capacity to do more.

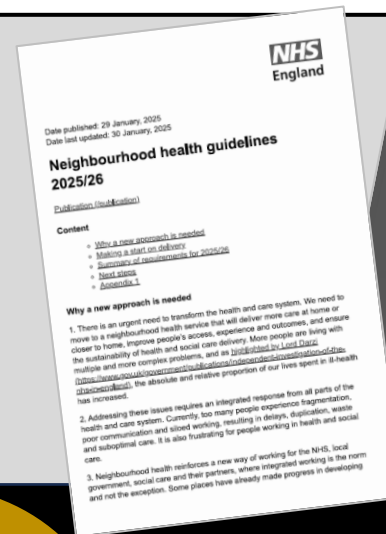
To challenge ourselves to go further

Our first annual stocktake on the progress we're making on our 'MK Deal' priority projects and towards our 2028 vision has highlighted the need to accelerate progress.

To accelerate progress towards the 2028 vision

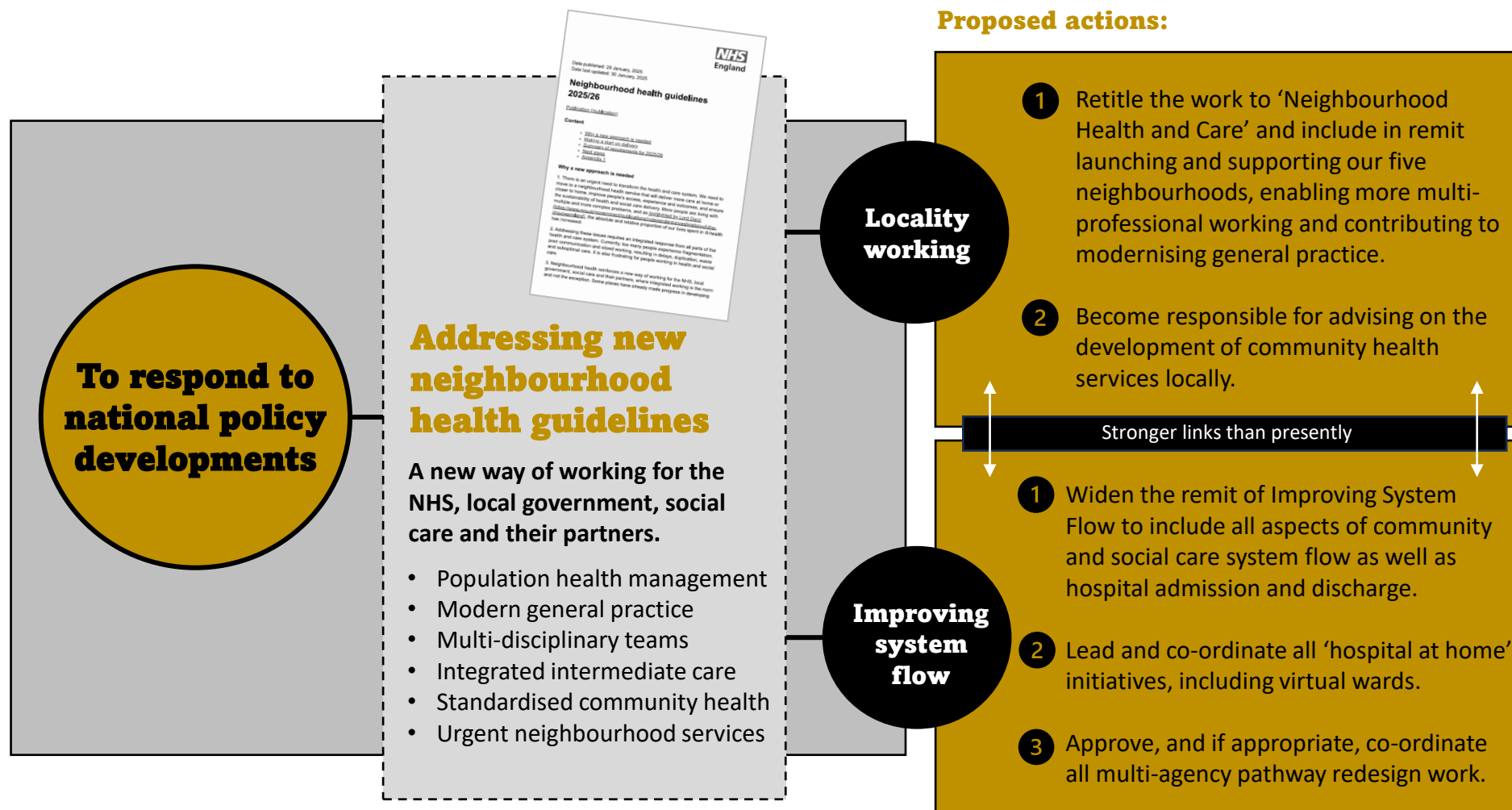
To respond to national policy developments

The government is resetting and clarifying expectations on local areas, for example the 'Neighbourhood health' guidance with more to come in the NHS 10-year plan.



What we need to do...

Next steps for locality working and improving system flow



What we need to do...

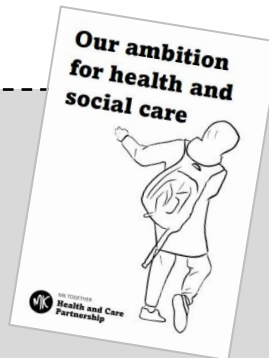
Next steps for our work improving children and young people's mental health

To accelerate progress towards 2028 vision

Address areas for development set out in the MK 2028 first year review

The review of progress towards the 2028 vision (January 2025) identified some necessary changes to the way we are working, particularly in relation to:

- Messaging
- Accountability
- Expectations



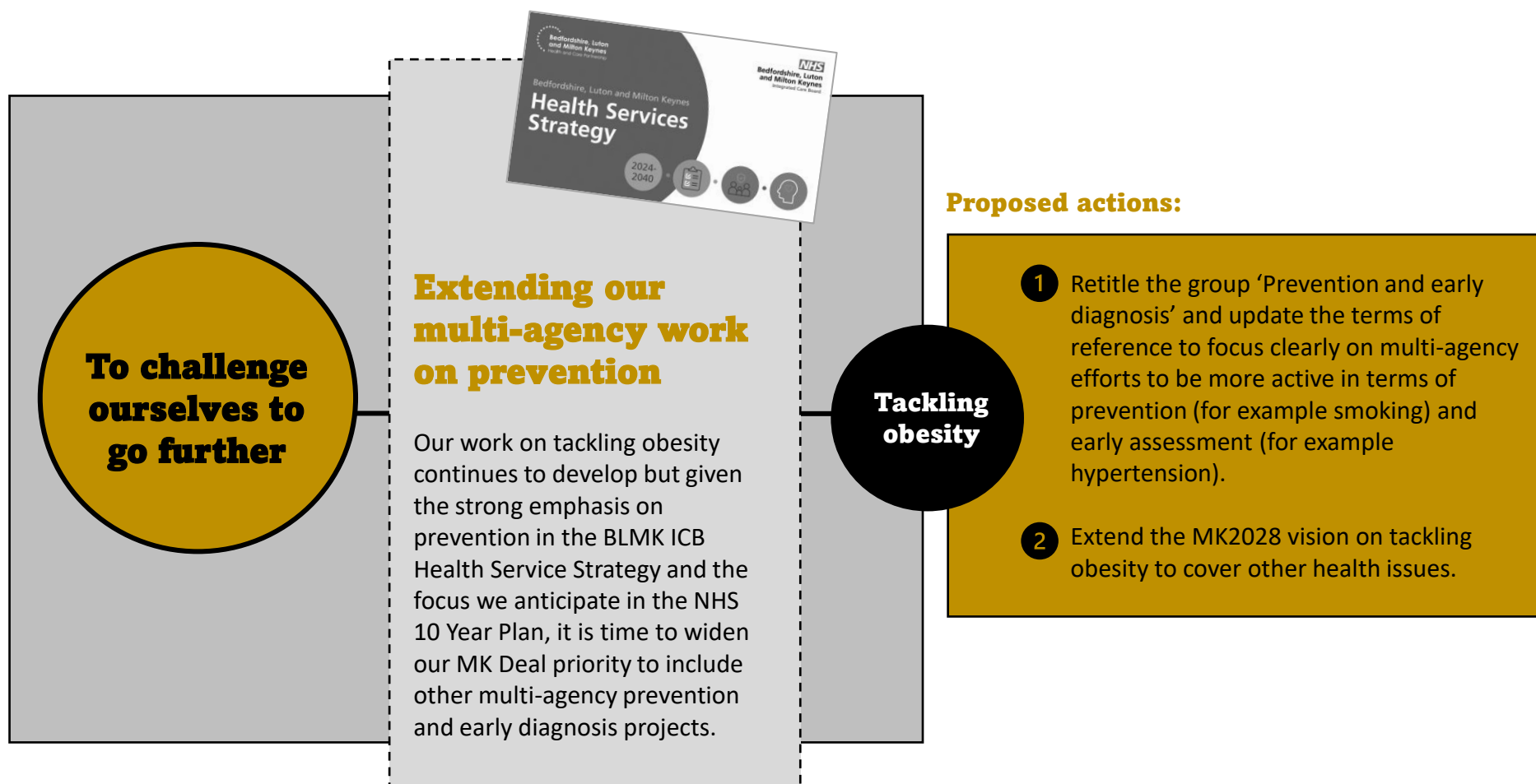
Children's mental health

Proposed actions:

- 1 Retitle the work 'Children's Mental Health Reform', refresh and prioritise the objectives for the workstream and write a focused one-year (April 2025-March 2026) delivery plan.
- 2 Revisit the best arrangements for chairing the steering group and membership (including from schools and perhaps an 'expert from elsewhere') and clarify responsibilities on members.
- 3 Increase the regularity of steering group meetings for 2025-2026 and any sub-groups.

What we need to do...

Next steps for our work to tackle obesity and on prevention more generally



What we need to do...

Next steps for the Milton Keynes Health and Care Partnership



Our partnership structure

MKCC Chief Executive (Chair)
 MK ICB Place Director
 MKUHFT Deputy Chief Executive
 MKUHFT Chief Executive
 CNWL NHS Trust Managing Director
 CNWL NHS Trust Executive Director
 Primary Care Networks – One representative
 MK Primary Care Alliance – One representative
 MKCC Director of Adult Services
 MKCC Director of Children's Services
 MKCC Director of Public Health
 VCSE Senior leader
 Head of Milton Keynes Improvement Action Team



The Leader of the Council (Chair)
 BLMK ICB Chair (Vice Chair)
 BLMK ICB Chief Executive
 MKUHFT Chief Executive
 CNWL NHS Trust Managing Director
 MKCC Chief Executive
 MKCC Director of Adult Services
 MKCC Director of Children's Services
 MKCC Director of Public Health
 Primary Care Network representative
 TVP Area Commander



TVP Area Commander (Chair)

Bucks Fire and Rescue Chief Officer
 South Central Ambulance Service
 Healthwatch Chief Executive
 MKCC Councillor from each group
 Independent scrutineer
 VCSE representative

Assurance

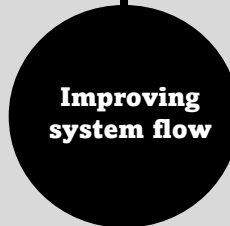
Delivery

Review

Child Death



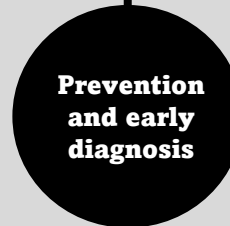
Subgroups



Subgroups



Subgroups



Subgroups